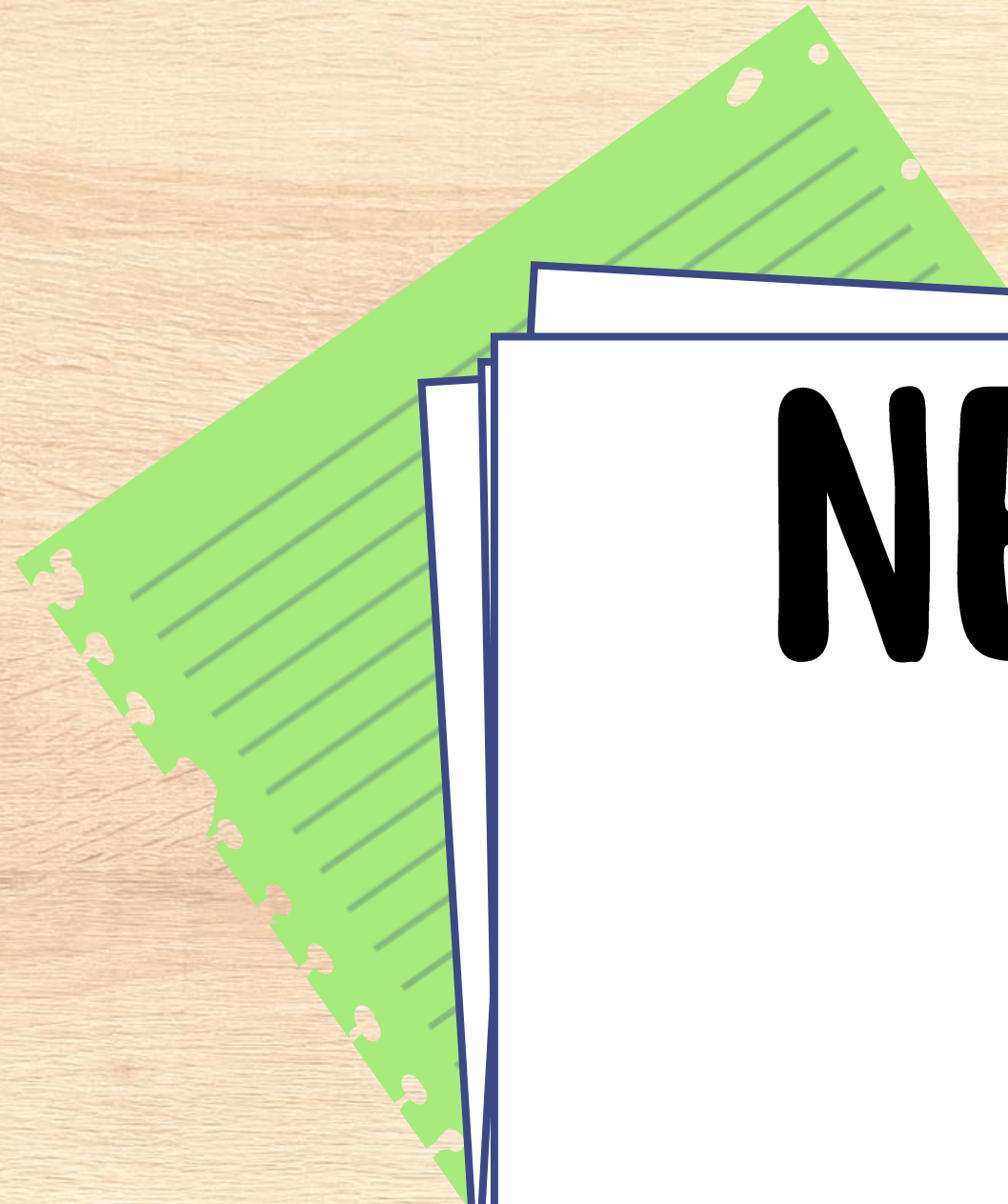
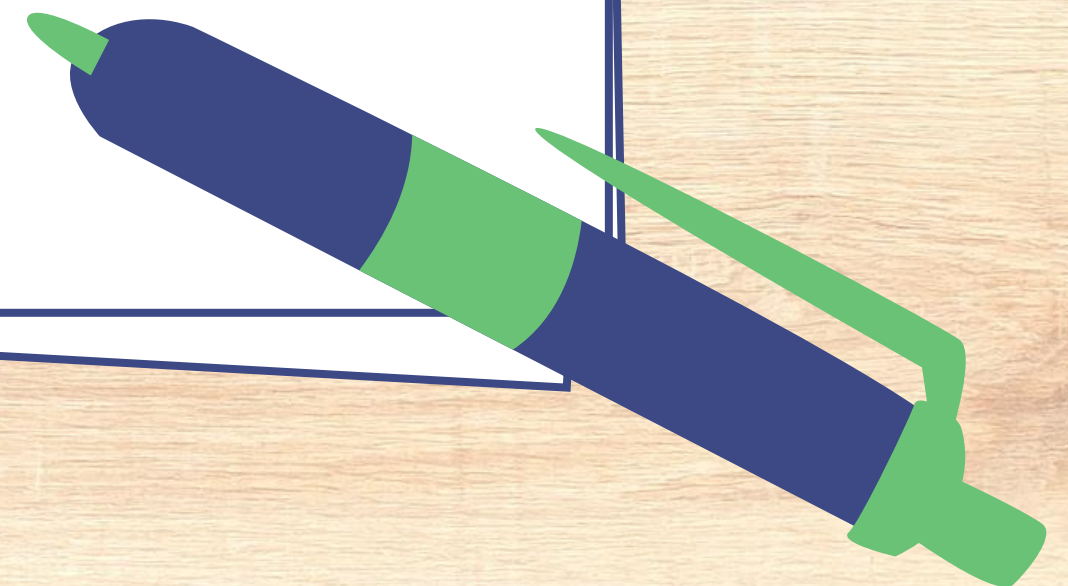


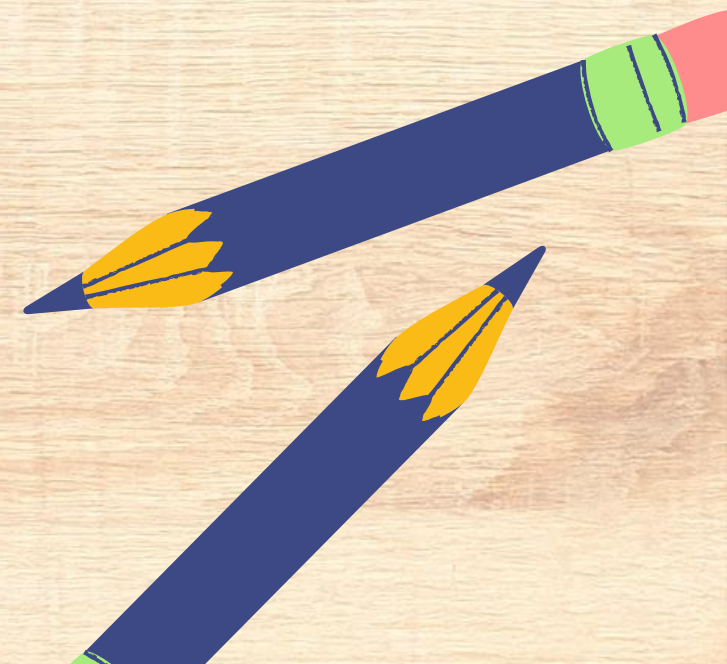
NEW TO YEAR 3

2024-2025



INTRODUCTIONS TO THE CURRENT AND NEW TEAM.

Mrs Goddard 3G
Mr Neumann 3N
Miss Huntbach
Mrs Richards



VISION AND VALUES

Vision

Our vision is to create a peaceful, nurturing Christian school community where everyone knows they belong. Our inclusive approach ensures that everyone is valued, has high aspirations and given opportunities to flourish in every area of life.

Our motto is 'Flourishing together, with God as our firm foundation'.

'Jesus said: you are Peter and on this rock I will build my church' (Matthew 16 v 18).

Considering our current context, needs, theological inspiration and the Good Shepherd Trust Values 'to be better, together, to ensure an ambitious education for every child in every school every day' our values became clear. Our growing diverse community is at the heart of our school and we aim to promote this as a peaceful place, both in learning, in ourselves and how we can solve problems.

Our school is a safe and nurturing place where everyone knows they are loved and how we can love one another. One of our learning behaviours is resilience and we want our children and whole school community to be resilient in learning and in life.

THE SCHOOL DAY.

Children should arrive between 8.35 – 8.50

Registration 8.50

Collective Worship 9.00

Morning break 10.15 or 10.30

Lunchtime 12.15 – 1.10

School ends 3.20

Your child will have their own locker outside of the classroom for their bags and coat. They will also have access to a tray to put things in throughout the day.

The school day starts at 8.50am and we open the doors from 8.35am, to ensure a prompt start to the day.

Our gates open at 8.35am and school staff will be on the gates from this time - therefore please do not leave your child on the school site before this time.

SCL run a Breakfast Care Club from 7.30am and an After School Care Club which runs until 6.00pm.

The children enter the school building via their exterior classroom doors which open onto the playground (lower school) or field (upper school).

The school day finishes at 3.20pm and teachers will dismiss the children from their classroom door to parents/carers waiting outside to collect them. Only children in Year 6 are allowed to walk home on their own as per our walking home policy; and if they have been given parental permission.

SCHOOL EXPECTATIONS

To respect and care for all members of the school community, adults and children as reflected in our Christian ethos.

To create a culture of exceptionally good behaviour; for learning, for community, for life.

To encourage pupils to make 'good choices'.

To promote community cohesion through improved relationships.

To help learners take control over their behaviour and be responsible for the consequences of it.

To build a community which values kindness, care, cooperation, and empathy for others

To develop courage and resilience in overcoming difficult situations, being able to move on from them positively

CURRICULUM EXPERIENCES



Maths

English



Light



Science

History/Geography



The Romans



The Antarctic

Art & D.T.



RE

Christianity through art



Important times for Jewish people



PSHE

PE

French

Computing

Music

CURRICULUM ENRICHMENT

Some extracurricular events that occur throughout the year include:

- **Special weeks / days-** world book day, Art week, Mental health awareness week, Charity events, Father's /Mother's day, Panto visit to school, Pause Days.
- **Sports Events-** District sports, Netball matches /tournaments, Football tournaments /festivals, Physifun festival, Sports day, Tennis lessons at Ash Manor tennis club.
- **Trips /Educational Experiences-** Butser Farm, Science Museum, History boxes from Farnham museum.
- **Extra Curricular Clubs-** Minecraft club, Maths club, Football club, Chess club, Drama, Music Lessons (Guitar & Keyboard), Art club, Netball club, Athletics, Morning circuits, Forest school , Gymnastics club.
- **Weekly Celebration Assembly** that celebrates children's achievements.

OUR GOLDEN PROMISES

Our Golden Promises



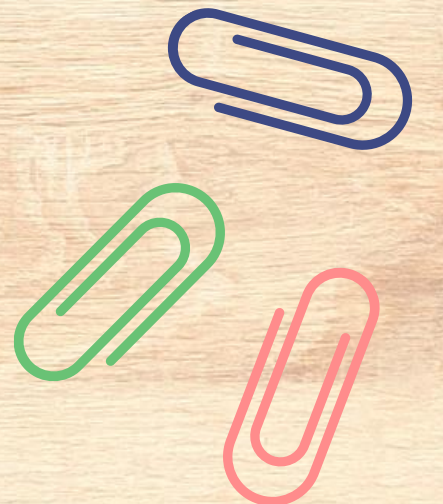
Be Safe



Be Ready



Be Kind and Respectful



WE NEED YOUR HELP

We ask that parents and carers:

- Support their child's learning, and to support staff to implement this behaviour policy.
- Model positive behaviours and build relationships.
- Promote positive behaviour at home in order to have continuity between home/school.
- Speak to the class teacher if they feel their child's emotional wellbeing in or out of school is impacting on the child's behaviour.
- Ensure regular and punctual attendance at school.
 - Actively to encourage their child to be a positive member of the school.
- Support the school by issuing appropriate consequences at home following instances of misbehaviour at school.

UNIFORM

SCHOOL UNIFORM

- Walsh Schools/Plain navy Sweatshirt, Walsh Schools/Plain navy Cardigan or Walsh Schools/Plain navy Fleece
- White polo shirt with or without logo
- Tailored, grey or black trousers, shorts, skirt or pinafore dress
- Grey, black, navy or white socks or tights
- Black trainers or school shoes, low heel (sandals, ballet styled shoes, coloured soles/laces or boots are not acceptable)

PE KIT

- White t-shirt with school logo or a plain white t-shirt.
- Black or navy shorts.
 - Non-marking plimsolls for indoor use and running trainers for outdoor use.
 - Plain black or navy jogging bottoms and a plain black or navy sweatshirt may be worn for outdoor games in the winter.
 - A spare pair of black or white socks.

PE Kit should worn to school on PE days.

EQUIPMENT

**STATIONERY ON OUR
LIST SHOULD BE
BROUGHT TO SCHOOL IN
A SIMPLE, SMALL, PLAIN
OR CLEAR PENCIL CASE**

**Don't forget to
bring a named
water bottle!**



Writing pencils
A small set of colouring
pencils
A pencil sharpener
An eraser
A ruler with
centimetres/millimetres
A whiteboard pen
A glue stick
A red biro

HOMework

The expectations for children in year 3.

Reading diaries must be signed every week.

Reading – minimum 4 times a week for 10 minutes, recorded in reading diary.

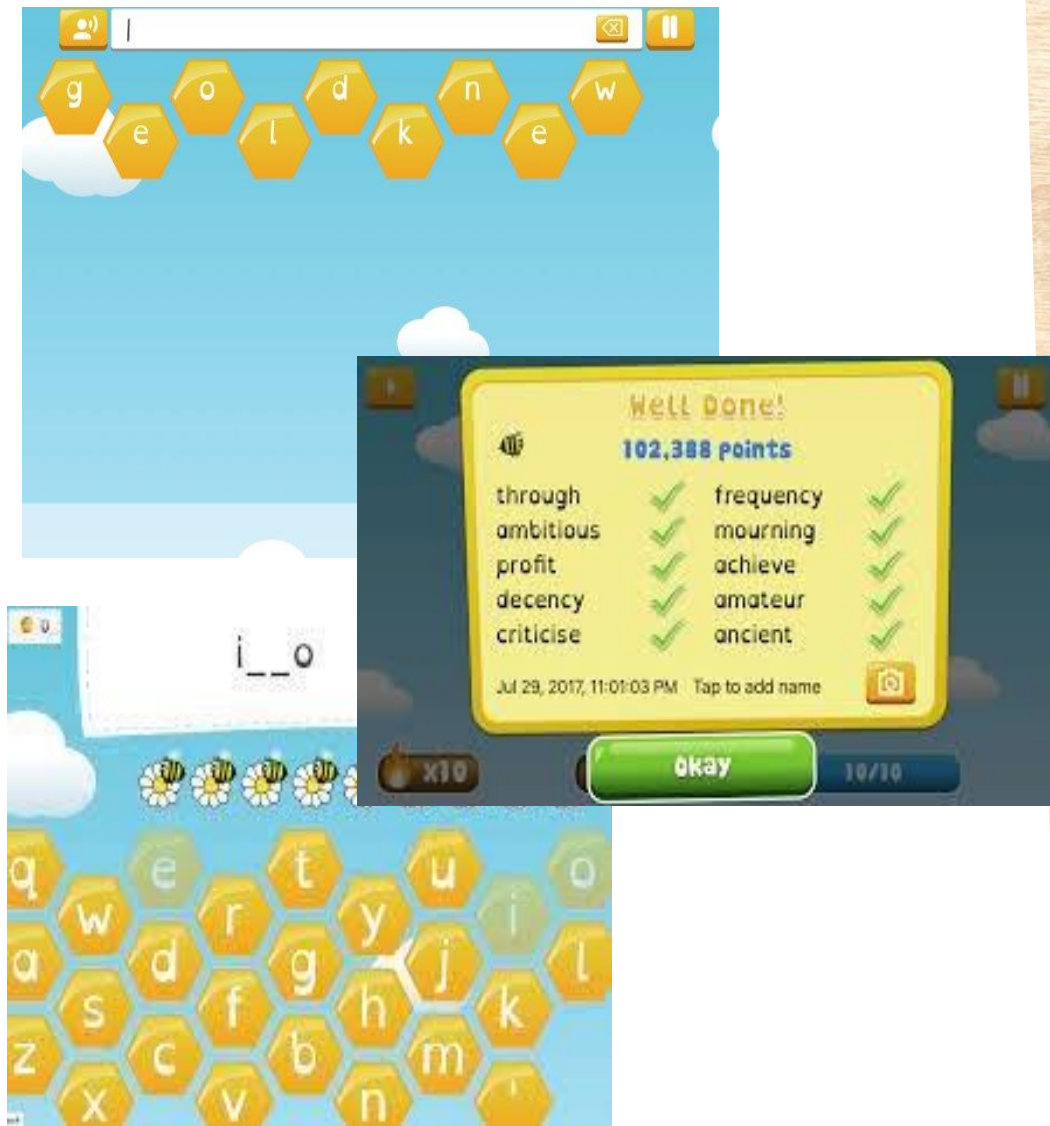
Spelling – practice daily (Spelling Shed)

Times Tables – practice daily on the focused times tables using Times Tables Rockstars.

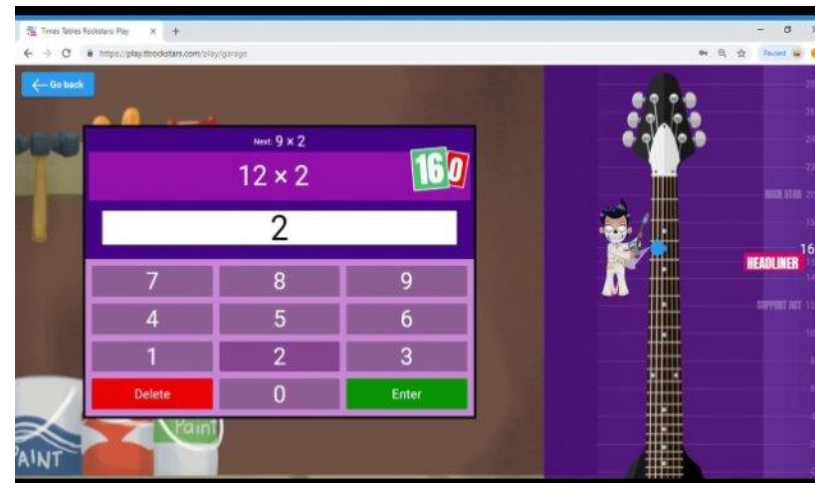
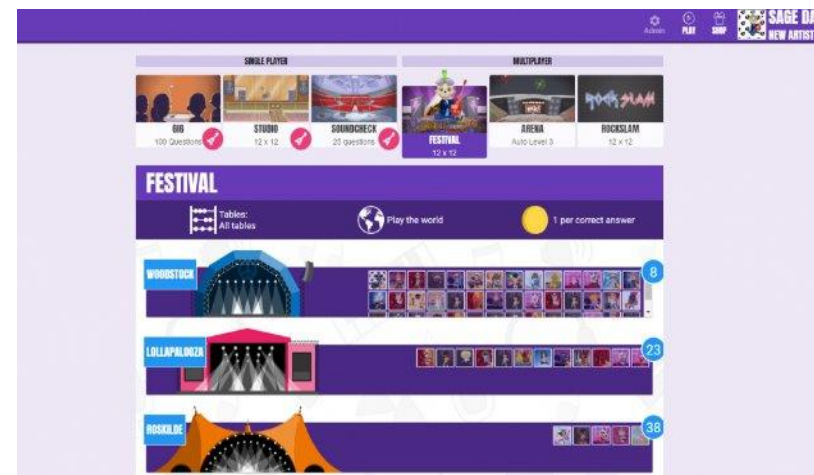
New from Sept 24 - Maths homework on mymaths

HOMework

Spelling shed



TTRS



My Maths



READING

Children will have access to the school library, they can take out two books to read each week. There is time for them to read throughout the week, but these books can also go home with them.

A growing number of studies show that promoting reading can have a major impact on children and their future. Upon reviewing the research literature, Clark and Rumbold (2006) identify several main areas of the benefits to reading for pleasure:

- Reading attainment and writing ability;
 - Text comprehension and grammar;
 - Breadth of vocabulary;
 - Positive reading attitudes;
 - Greater self-confidence as a reader;
 - Pleasure in reading in later life;
 - General knowledge;
 - A better understanding of other cultures;
 - Community participation; and
 - A greater insight into human nature and decision-making.
- (DfE 2012)

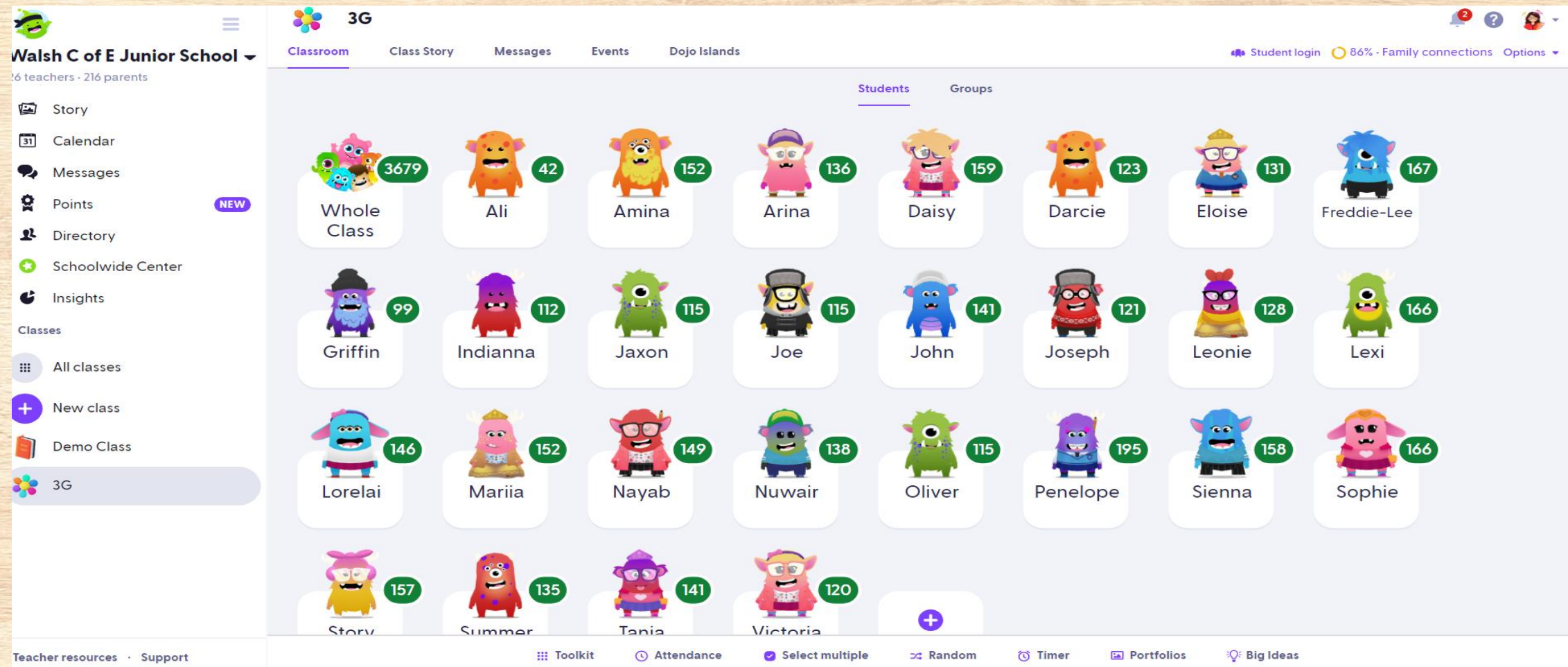
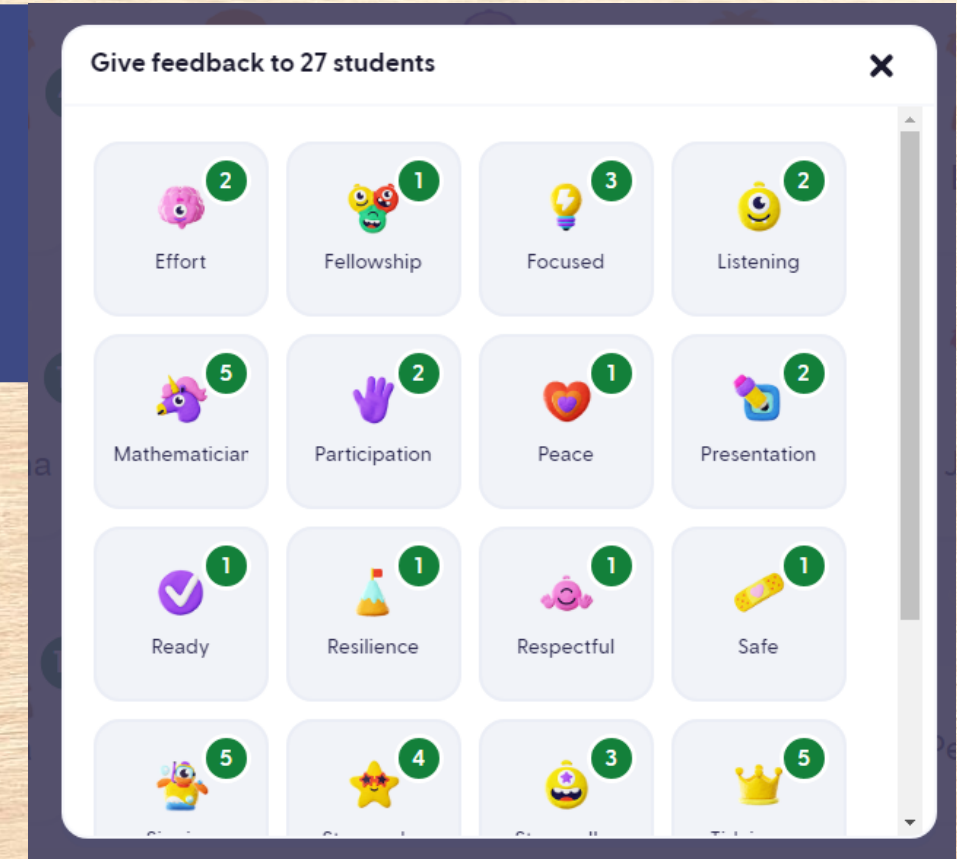
CLASS DOJO

We use class dojo at the juniors. This is a reward system that award points for good behaviour. Our values and golden promises are on there too!

You will be given a QR code to access your child's account, when their monster hatches

they can personalise it to make it their own.

When they reach 100 dojo points they will receive a treat.



TRANSITION DAY

On the morning of Wednesday 26th June 2024, your child will come into school to attend their transition day. If your child attends Walsh Infant School, they will be escorted over by members of staff. If your child attends another school, they will need to be dropped off to Walsh Junior School by yourselves at 9:15am. They will need to arrive through the school office.

They will meet their new class teacher, LSA and new class for the first time. On this morning, they will take part in lots of fun activities to help them to settle into their new school.

QUESTIONS